

# InDot Integrated Dot Peen Marking Series

**PRYOR**  
MARKING TECHNOLOGY



[www.pryormarking.com](http://www.pryormarking.com)



# InDot: Integrated Dot Peen Range

Compact

Robust

## NEW: Compact InDot 50-25



### Features:

- Extremely compact: 92mm x 130mm (3.6 x 5.1") footprint
- Excellent marking area/foot print ratio
- 25% larger marking area than most compact machines
- No pivoting axis flat X/Y movement:
  - Consistent marking depth throughout marking area



## InDot FP Series Fast Pneumatic Series

- Unbeaten Speed
- High Dot Density (HDD)

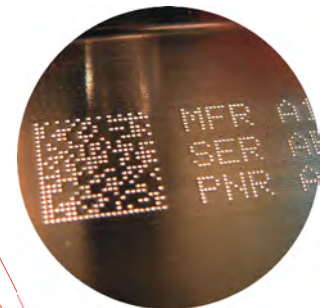
Marking Areas Available:  
50x25mm (2x1")



## InDot E Series Electromagnetic Series

- Electromagnetic - No air supply required
- Preferable method of marking Data Matrix
- Precision and consistency of individual dots
- **NEW:** Increased marking depth and amplitude

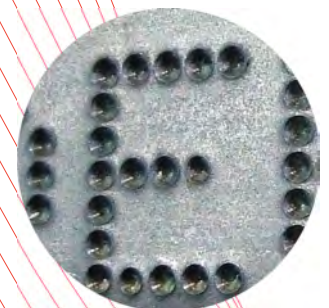
Marking Areas Available:  
50x25mm (2x1")      150x150mm (6x6")  
60x60mm (2.4x2.4")      300x150mm (12x6")  
130x30mm (5.1x1.2")



## InDot DP Series Deep Pneumatic Series

- Very Deep Marking
- Up to 0.9mm indentation in steel

Marking Areas Available:  
60x60mm (2.4x2.4")  
150x150mm (6x6")  
300x150mm (12x6")



### About Dot Peen Marking:

Series of dots are indented into materials to form alphanumeric characters, logos or 2D Data Matrix codes. Permanently mark almost all engineering materials up to 62 HRC.

# Reliable

# Fast

# Easy to Install

## 3000 Controller Version

PC not required  
 Large graphical display  
 Full membrane keyboard  
 Screen linked function keys



### Marking Features:

Fixed texts, variables, serial numbers, arc and angular, time/date, Data Matrix, logos, backward & forward marking, etc.

### Standard Communication:

PC/PLC/barcode reader/printer connection, text reception, uploads & downloads, select file, automation control, USB, RS232, Programmable 24V digital 8 Inputs/6 Outputs



### Available Options:

I/O Extended to 16I/12O  
 TCP/Ip Ethernet  
 Bluetooth  
 RS485

### Industrial Network & Fieldbuses:

BACnet MSTP, CANopen, CC-Link, CompoNet, ControlNet, DeviceNet, Modbus-RTU, Profibus, BACnet/IP 2-port, EtherCAT, EtherNet/IP, EtherNet/IP 2-port, Modbus-TCP, Profinet-IO, Profinet-IO 2-port, Sercos III

## USB Controller Version

Marking head permanently connected to a PC with MarkMaster software.



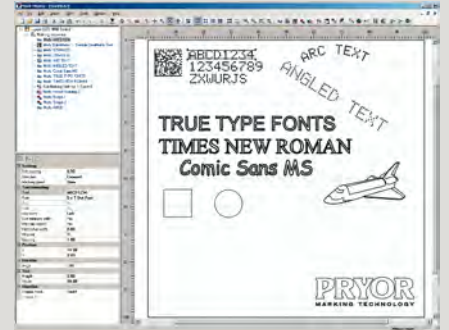
Drag, drop, scale, rotate graphical interface. Align, group marking blocks, show marking path.



Variables, serial numbers, time/date, Data Matrix, logo (.hpgl/.plt&.dxf)

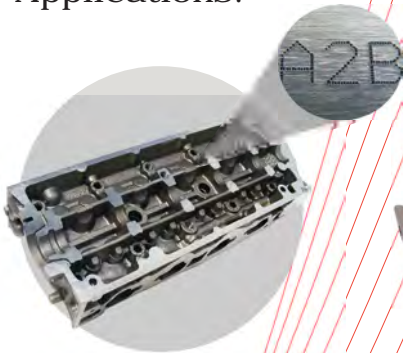
Query & write back to Excel, Access, SQL Server, My SQL etc, duplicate data checking and log data (history) (\*)

Supports all Windows© True Type Fonts (\*), including Chinese, Japanese, Korean (...) characters.



(\*) Requires MarkMaster™ Advanced software

## Applications:



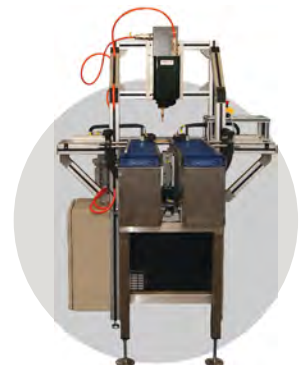
Automotive marking



Aerospace marking



Key marking



Production Line

## About Pryor Marking Technology:

Pryor Marking Technology manufactures the widest range of permanent marking systems along with its own Data Matrix readers, verifiers and traceability software solutions.

Our subsidiaries and distributors, in over 50 countries, design and support the most advanced standard and custom made identification machines, worldwide.

[www.pryormarking.com](http://www.pryormarking.com)



## Technical Specifications:

### Common Technical Info:

<b>Electrical Supply:</b>	100-230V / 200VA
<b>Frequency:</b>	50-60Hz
<b>Air Supply(DP&amp;FP):</b>	6bars (87psi) Non Lubricated Dry Air
<b>Head Cable:</b>	3m (9.8 ft) Robotic Cable

### Marking Area: (mm/in)

InDot	50-25 (2x1")
InDot	130-30 (5.1x1.2")
InDot	60-60 (2.4x2.4")
InDot	150-150 (6x6")
InDot	300-150 (12x6")

### Version Available:

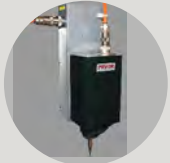
FP	E	DP
○	○	
	○	
	○	○
	○	○

Detailed Information and CAD files are available at [www.pryormarking.com](http://www.pryormarking.com)



**Twin** Linear Guide Rails and bearing

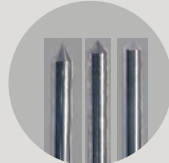
## Optional Extras:



Electric/Pneumatic Z-Axis



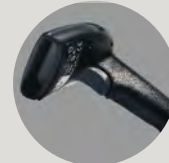
90° Connector



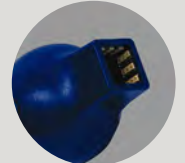
Various Stylus



Base & Column



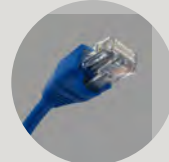
Barcode Scanner



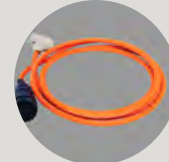
Data Matrix Readers



I/O Extension



Fieldbuses (See Inside)



6m & 10m Head Cable



Plastic Colour Mark



Start/Stop Box



Foot Pedal

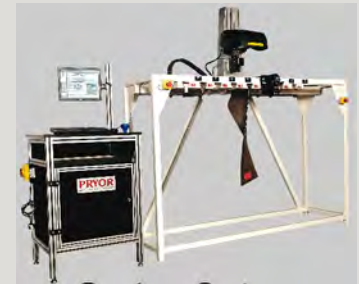
## Alternative Dot Peen Machines:



**Portable** Machines



**Bench Top**



**Custom Systems**

## Other Technologies:



**Scribe** Marking



**Laser** Marking



**Electro-Chemical**  
Etching



**Manual & Press**  
Marking



**Traceability**  
Products

# www.pryormarking.com

**Pryor Marking Technology**  
Egerton Street  
Sheffield  
S1 4JX  
England

**Tel:** +44 (0)114 276 6044  
**Fax:** +44 (0)114 276 6890

**Email:** [enquiries@pryormarking.com](mailto:enquiries@pryormarking.com)  
**Website:** [www.pryormarking.com](http://www.pryormarking.com)